

PL2303 USB-to-Serial Bridge Chip Family **Windows Driver Installer User Manual**

WHQL Driver Version Information

- ✓ Driver Installer & Build date: **1.6.1 (2012-5-3)**
 - GUID: ECC3713C-08A4-40E3-95F1-7D0704F1CE5E
- ✓ Windows 2000/XP/Server2003 (32 & 64-bit) **WDM WHQL Driver: v2.1.30.193**
- ✓ Windows Vista/7/Server2008/8 (32 & 64-bit) **WDM WHQL Driver: v2.1.30.193**

System Requirements

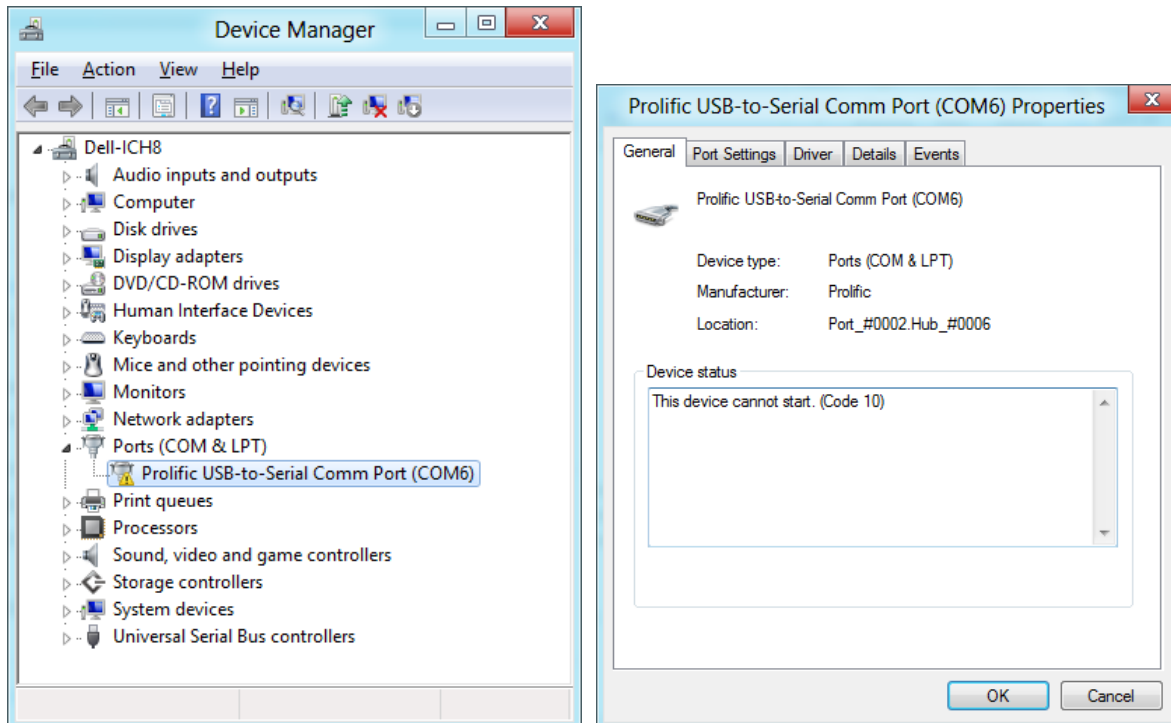
- ✓ PC with USB 1.1/2.0/3.0 Host Controller (USB Port) and following Windows OS Family:
 - Windows 2000 SP4
 - Windows XP SP2 or SP3 (32 & 64 bit)
 - Windows Server 2003 (32 & 64 bit)
 - Windows Vista (32 & 64 bit)
 - Windows 7 (32 & 64 bit)
 - Windows Server 2008 / 2008 R2 (32 & 64 bit)
 - Windows 8 (32 & 64 bit)
- ✓ USB Device with below PL-2303 chip versions and their supported OS Family:

Chip Version	2000 / XP / Server 2003 (32 & 64 bit)	Vista / 7 / Server2008 (32 & 64 bit)	Windows 8 (32 & 64 bit)
PL-2303H	Yes	Yes	Not Supported*
PL-2303HX (Rev A)	Yes	Yes	Not Supported*
PL-2303X	Yes	Yes	Not Supported*
PL-2303HX (Rev D)	Yes	Yes	Yes
PL2303TA	Yes	Yes	Yes
PL2303TB	Yes	Yes	Yes
PL2303EA	Yes	Yes	Yes
PL2303RA	Yes	Yes	Yes
PL2303SA	Yes	Yes	Yes

* - PL2303H, PL-2303HX (RevA), and PL-2303X are EOL and discontinued chips and Prolific will not provide Windows 8 driver support. New driver version will show yellow mark (Error Code 10) in Device Manager for these EOL chip versions under Windows 8.

Counterfeit Warning!!!

Please be warned that counterfeit/fake PL-2303HX Rev A (or PL-2303HXA) USB-to-Serial Controller ICs using Prolific's trademark logo, brandname, and drivers, are being sold in the China market. Counterfeit IC products show exactly the same outside chip markings but generally are of poor quality and causes Windows driver compatibility issues (**Yellow Mark Error Code 10 in Device Manager under WinXP, Vista, and 7**). This warning is issued to all customers and consumers to avoid confusion and false purchase. Please purchase only from stores or vendors providing technical and RMA support.



Windows Driver Installation

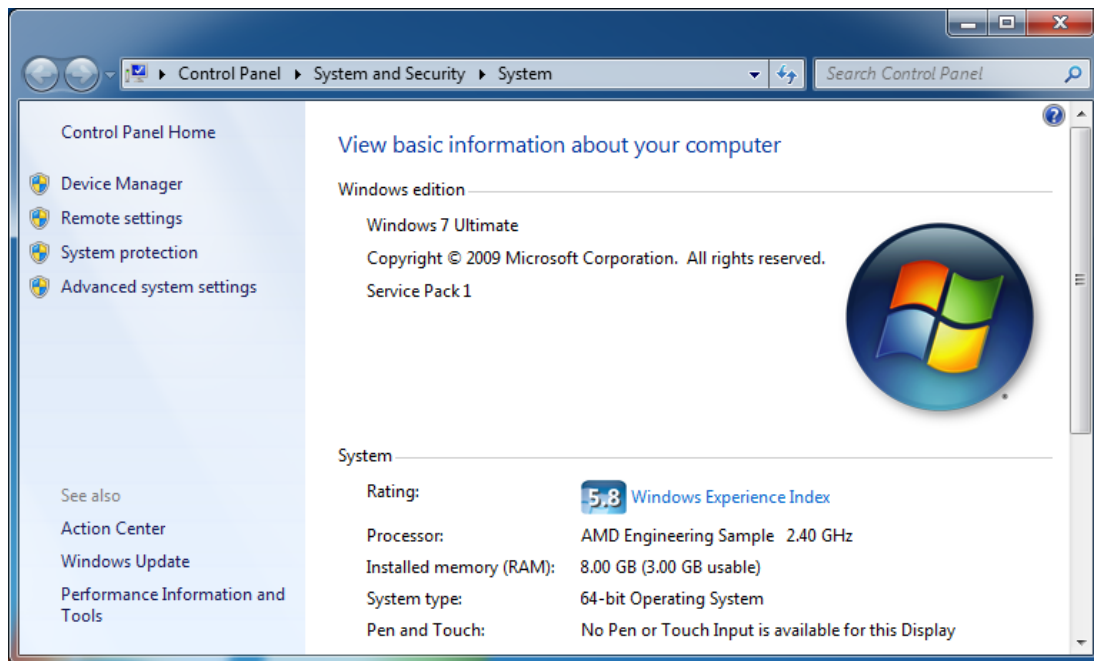
This section will guide you on how to install the PL-2303 Windows Driver. You can download the latest Driver Installer program from Prolific Support website:

<http://www.prolific.com.tw/eng/downloads.asp?ID=31>

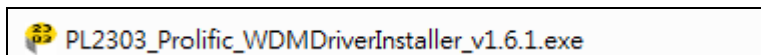
Note:

Please take notice of the installation order. First, run the Driver Installer Program before plugging in the USB to Serial adapter. If you already plug the device during the driver installation, you need to re-plug the device for Windows to enumerate the device and load the drivers installed. If your device is embedded to the system, you might need to restart the system to reload and install the driver.

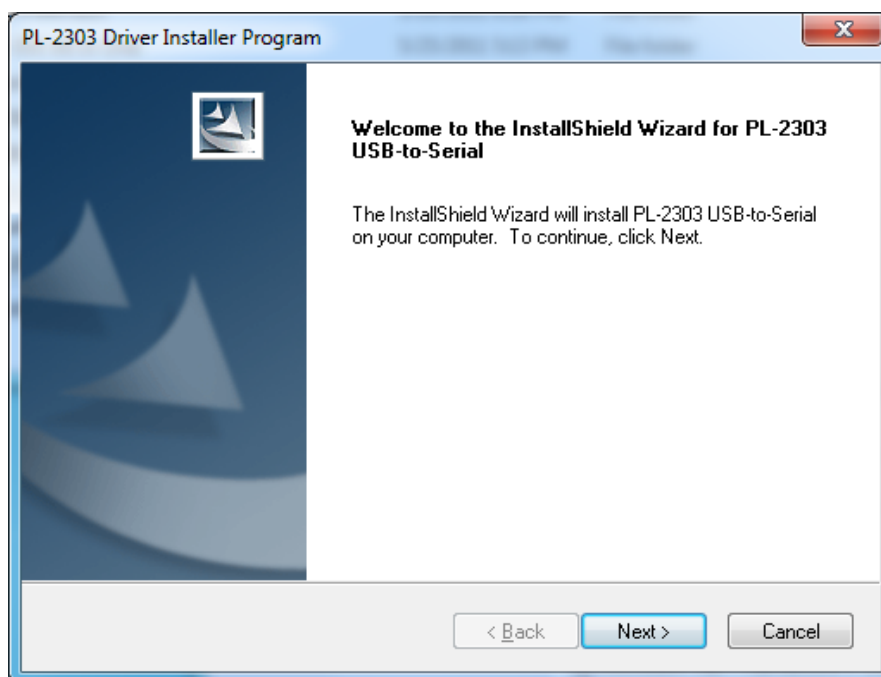
The following steps will show how to install the device under **Windows 7 (64-bit)** OS as this is the most inquired driver installation support received by Prolific. The procedures are the same and straightforward for all other supported Windows operating system versions.



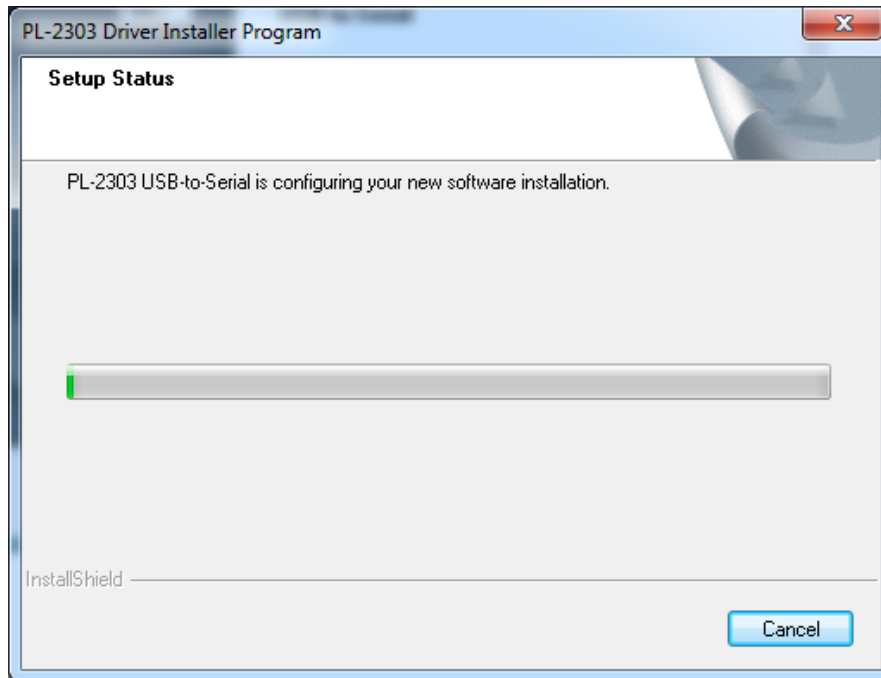
1. Power on your computer and boot to Windows. Run or double-click the PL-2303 Windows Driver Installer program.



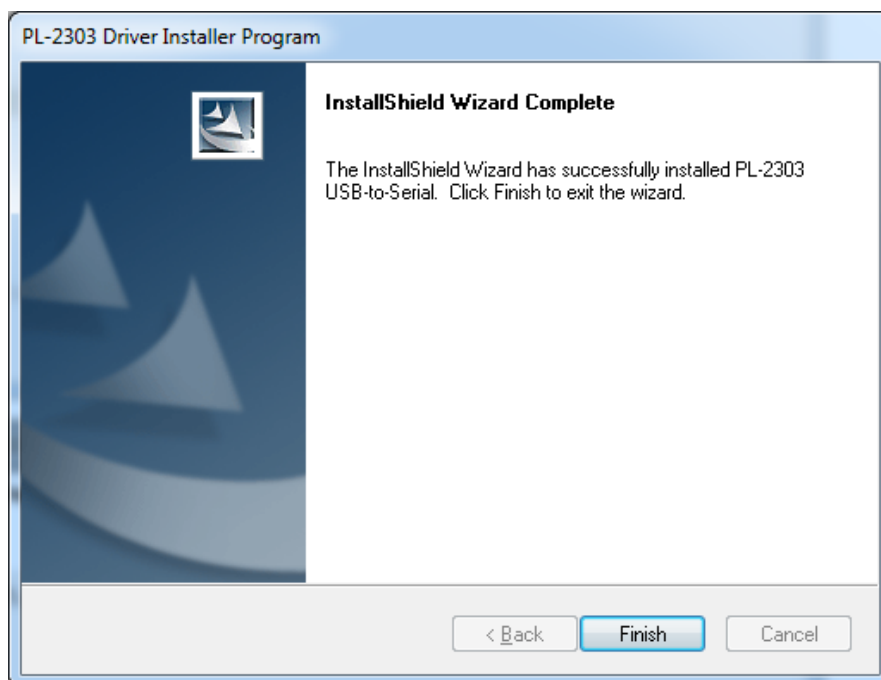
2. The InstallShield Wizard will be displayed to inform you that the PL-2303 USB-to-Serial driver will be installed on your computer. Click Next to continue.



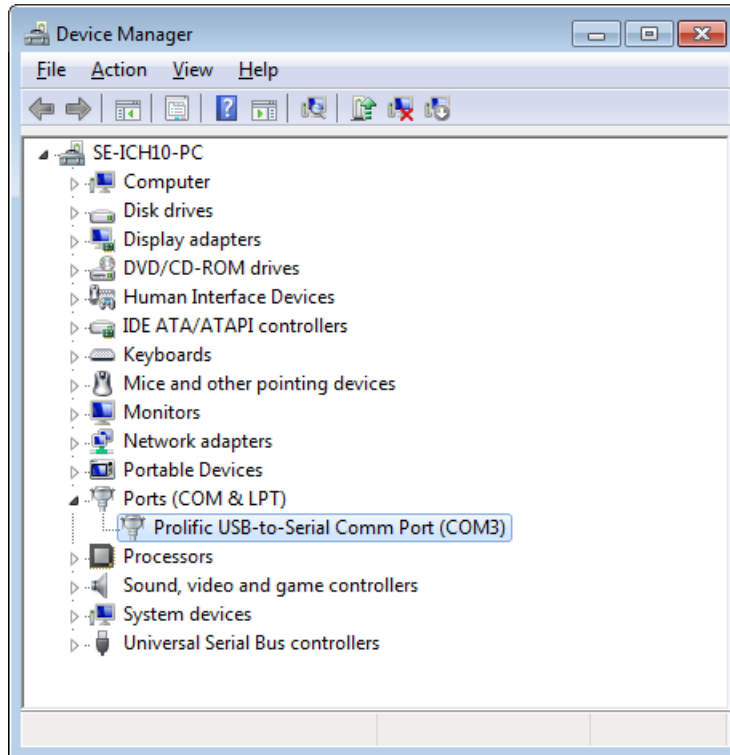
3. The PL-2303 Driver Installer program will then start to install the drivers needed.



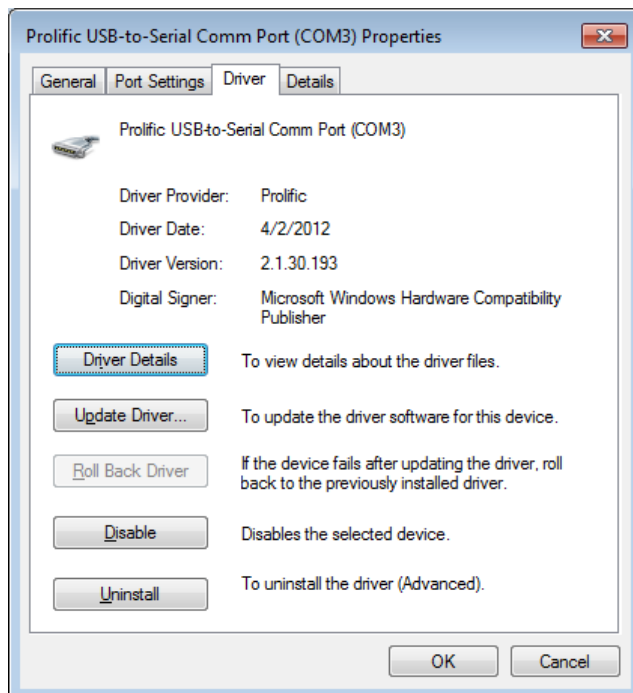
4. Click the Finish button to close the InstallShield program. If you have plugged the cable into the PC while running the setup installation, please unplug and replug the cable for the system to detect the device.



5. Plug in the USB to Serial adapter to the PC USB port. Windows should detect the driver as Prolific USB-to-Serial Comm Port. Go to Device Manager and check for the "Prolific USB-to-Serial Comm Port" device and the COM port number assigned by Windows.



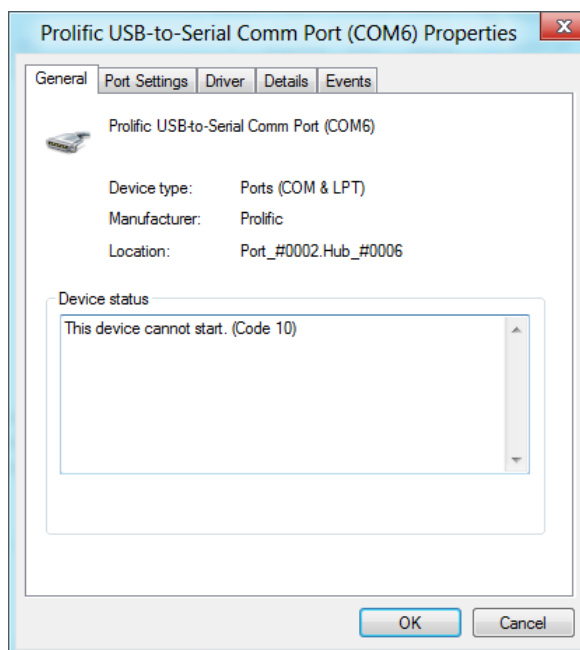
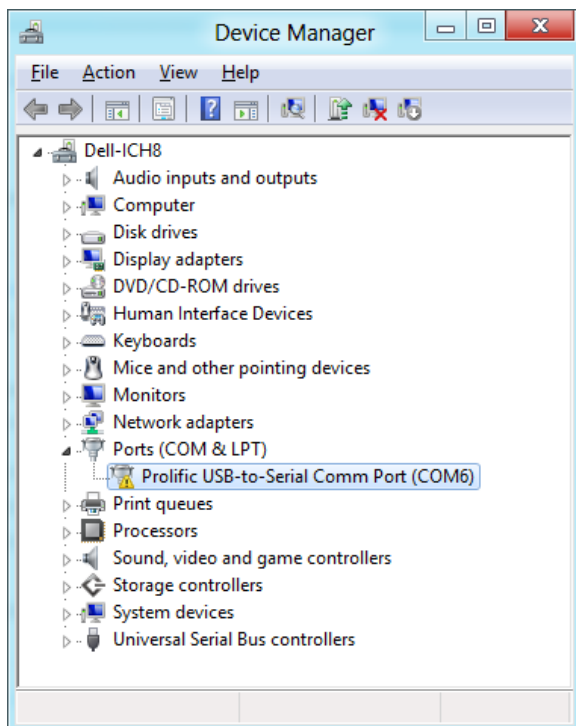
6. You can also check the driver version by right-clicking on the "Prolific USB-to-Serial Comm Port" device and select Properties and Driver tab.





Warning!!!

If you are encountering yellow mark (Error Code 10) for device in Device Manager under Windows XP, Vista, or Windows 7, you need to contact the cable vendor or manufacturer for possible counterfeit chip. Prolific does not manufacture or sell any end-user market products and will not provide or be responsible for direct support to end-users.



Windows 8 Support Notice

This section will guide you on what PL-2303 chip versions are supported by Prolific in Windows 8:

Chip Version	Chip Availability	Windows 8 (32 & 64 bit)
PL-2303H	Discontinued (EOL)	No New Driver Support*
PL-2303HX (Rev A)	Discontinued (EOL)	No New Driver Support*
PL-2303X	Discontinued (EOL)	No New Driver Support*
PL-2303HX (Rev D)	Available	Yes
PL2303TA	Available	Yes
PL2303TB	Available	Yes
PL2303EA	Available	Yes
PL2303RA	Available	Yes
PL2303SA	Available	Yes

* - New Driver does not support PL-2303H, PL2303HX (Rev A), and PL2303X in Windows 8. It will show a yellow mark (Error Code 10) in Device Manager similar to what counterfeit chips would show.

Check Chip Version Tool

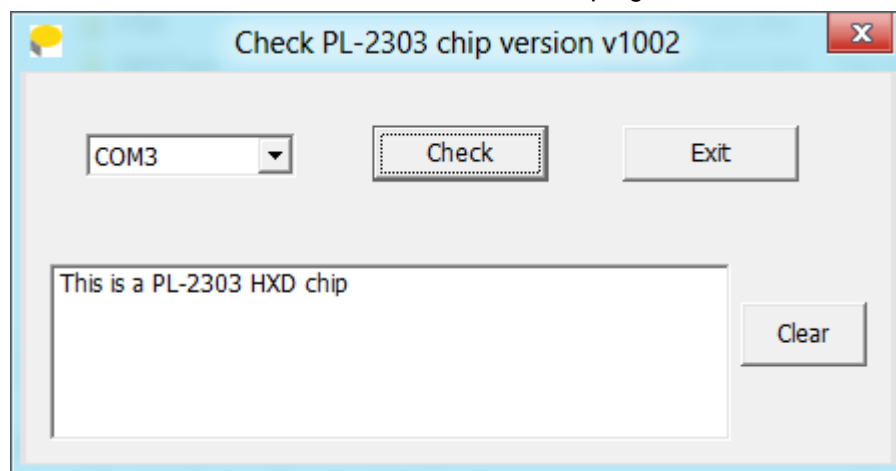
Prolific will also be providing a tool program together with the driver to check the chip version of your device for Windows 8 ready driver support. You can also download it separately in Prolific website:

<http://www.prolific.com.tw/eng/downloads.asp?ID=31>

NOTE:

This tool will not work in Windows 8 if the PL-2303 device shows a yellow mark in Device Manager.

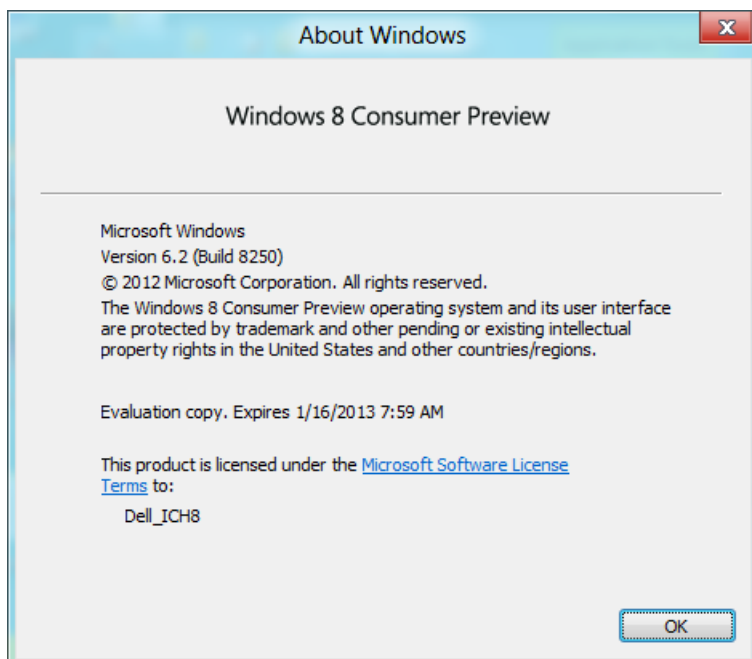
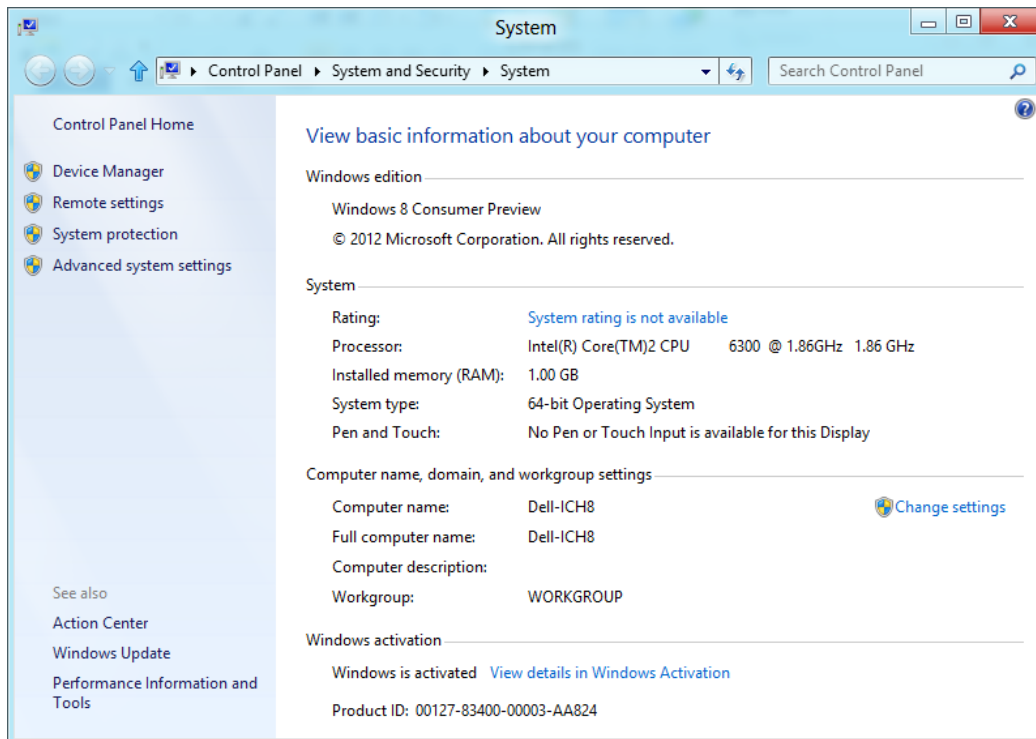
You need to use Windows 7 or XP to run the tool program for discontinued chip versions.



Windows 8 Installation

This section will guide you how to install the PL-2303 device in Windows 8 (Build 8250) Operating System. You can download the latest Driver Installer program from Prolific Support website:

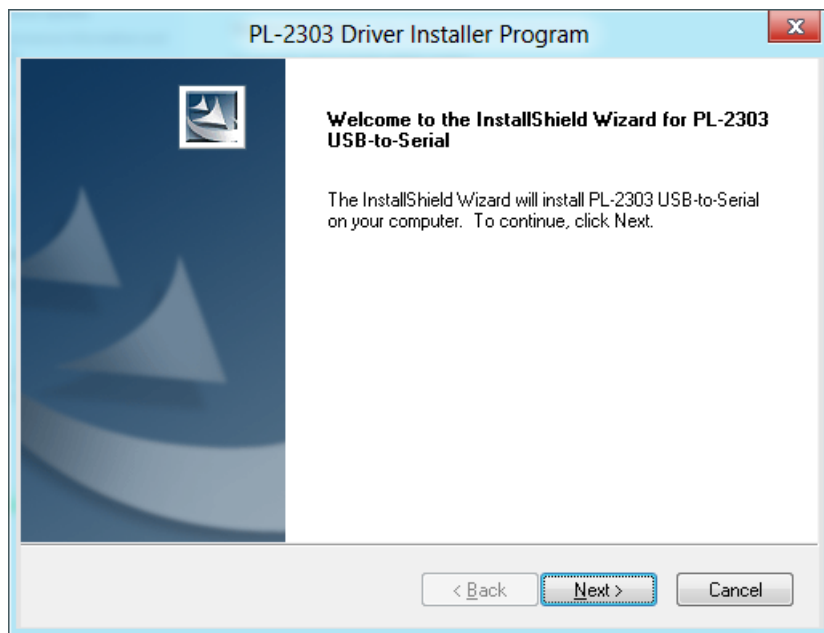
<http://www.prolific.com.tw/eng/downloads.asp?ID=31>



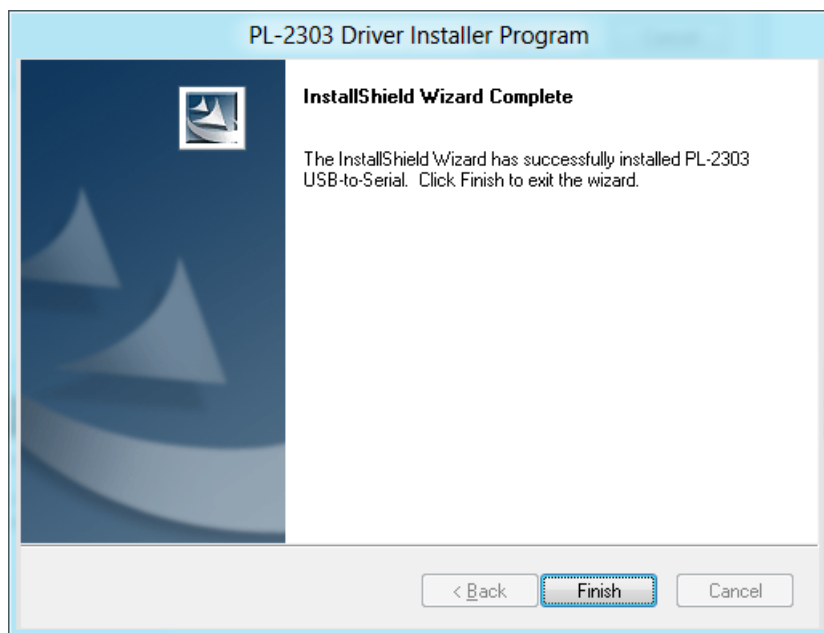
1. Power on your computer and boot to Windows 8. Go to desktop and run or double-click the PL-2303 Windows Driver Installer program.



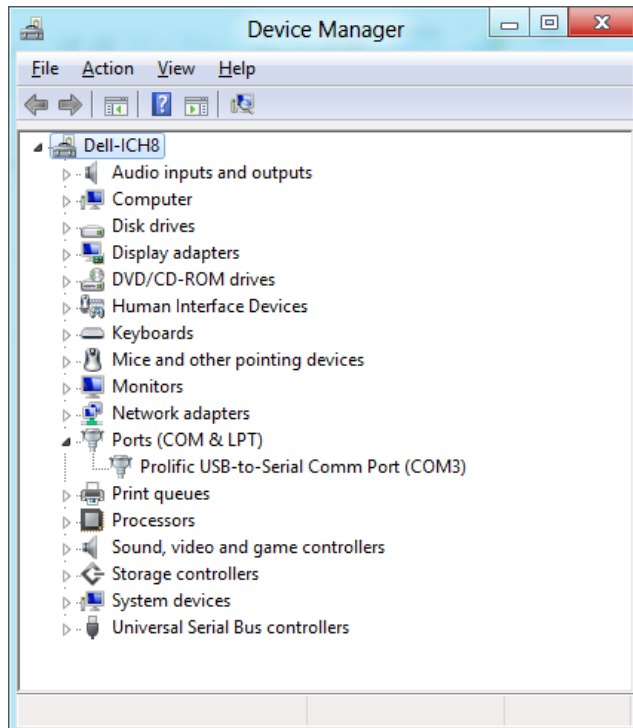
2. The InstallShield Wizard will be displayed to inform you that the PL-2303 USB-to-Serial driver will be installed on your computer. Click Next to continue.



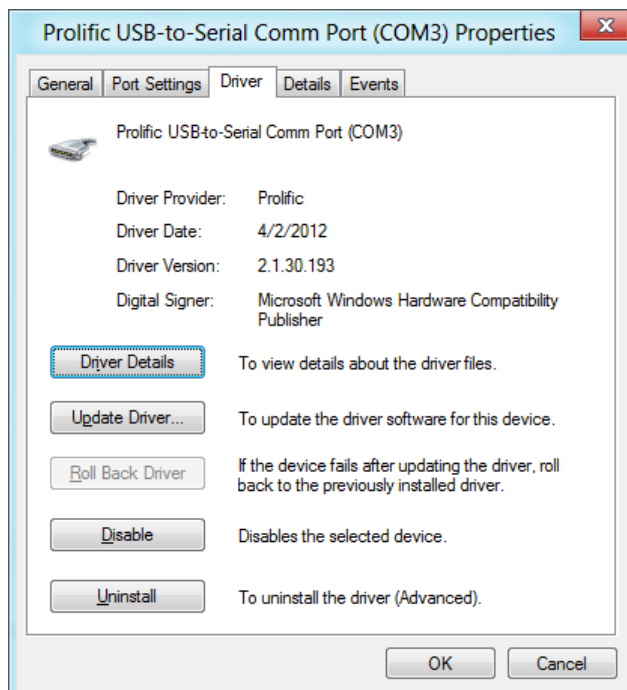
3. The PL-2303 Driver Installer program will then start to install the drivers needed. Click the Finish button to close the InstallShield program.



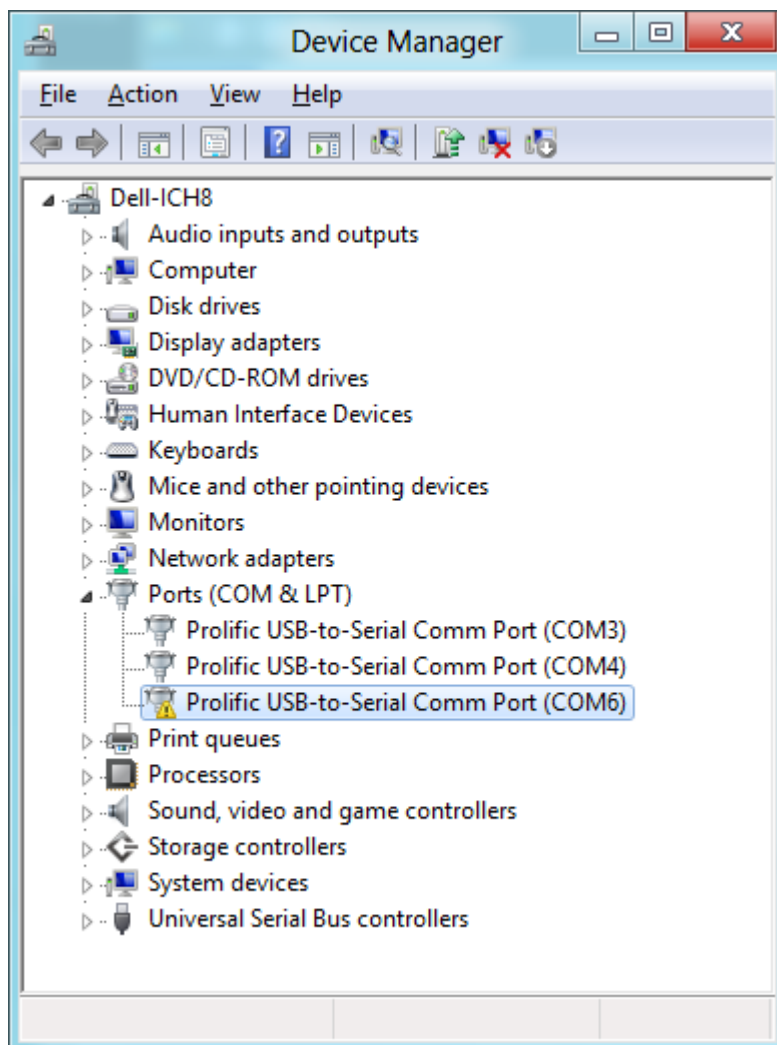
4. Plug in the USB to Serial adapter to the PC USB port. Windows should detect the driver as Prolific USB-to-Serial Comm Port. Go to Device Manager and check for the "Prolific USB-to-Serial Comm Port" device and the COM port number assigned by Windows.



5. You can also check the driver version by right-clicking on the "Prolific USB-to-Serial Comm Port" device and selecting Properties and Driver tab.



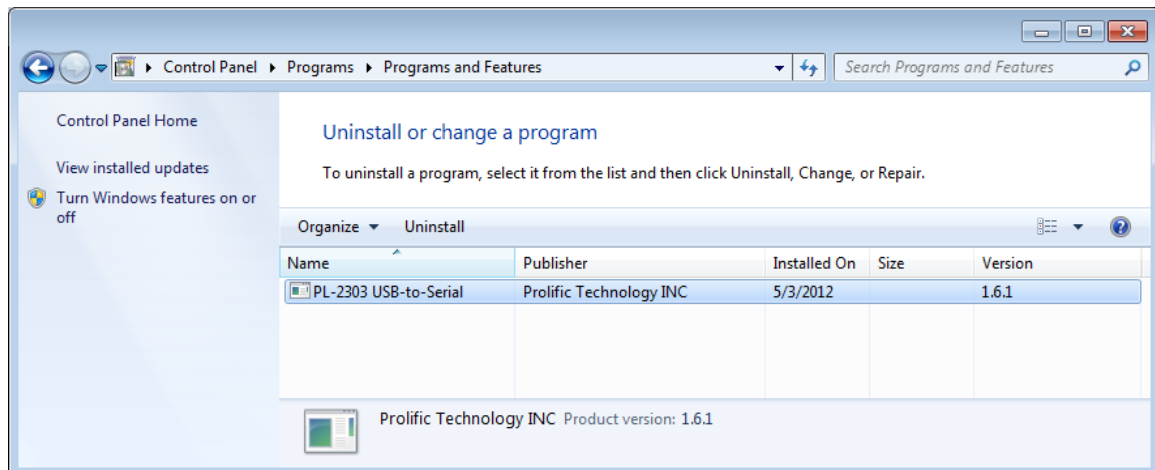
6. The COM Port number for the PL-2303 is assigned by the Windows Operating System. If you encounter a device that shows a yellow mark (Error Code 10), you need to check if that device is using an old version Prolific chip or a counterfeit chip. As mentioned in the previous sections, Prolific does not support old version chips in Windows 8.



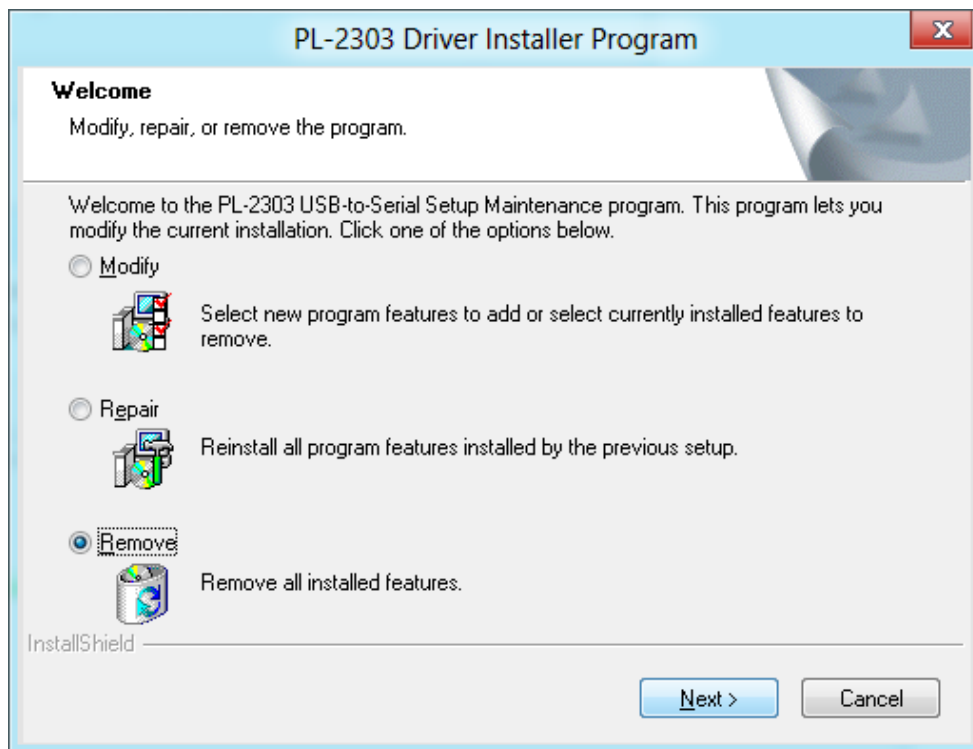
Uninstalling the PL-2303 Driver

To uninstall the PL-2303 driver, follow the below steps:

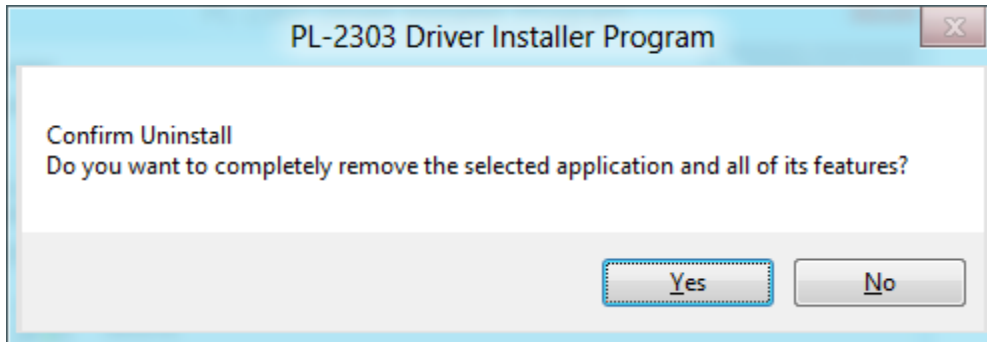
1. Click Start - Control Panel - Programs - Uninstall a Program (Add or Remove Programs). Look for the "PL-2303 USB-to-Serial" program and click the Uninstall (Remove) button.



2. InstallShield Wizard will then start the maintenance program and will prompt you to choose if you want to modify, repair, or remove the driver. Click the Remove button and click Next to begin the driver uninstall.



3. The InstallShield Wizard will prompt you to confirm to uninstall. Click Yes to continue.



4. Wait for the InstallShield Wizard to complete the uninstall process. When complete, click Finish to end the program. Wait for some few seconds until the "PL-2303 USB-to-Serial" program is removed from the Control Panel Uninstall (Add or Remove Programs) program list.

